



AALBORG WHITE®
Global Overview

SMCD
March 2019



AALBORG WHITE®

INTERNATIONAL
CEMENT BUSINESS CONFERENCE & EXHIBITION
WHITE NIGHTS

www.white-nights.info
May 29-31, 2019
Grand Hotel Europe
St. Petersburg, Russia

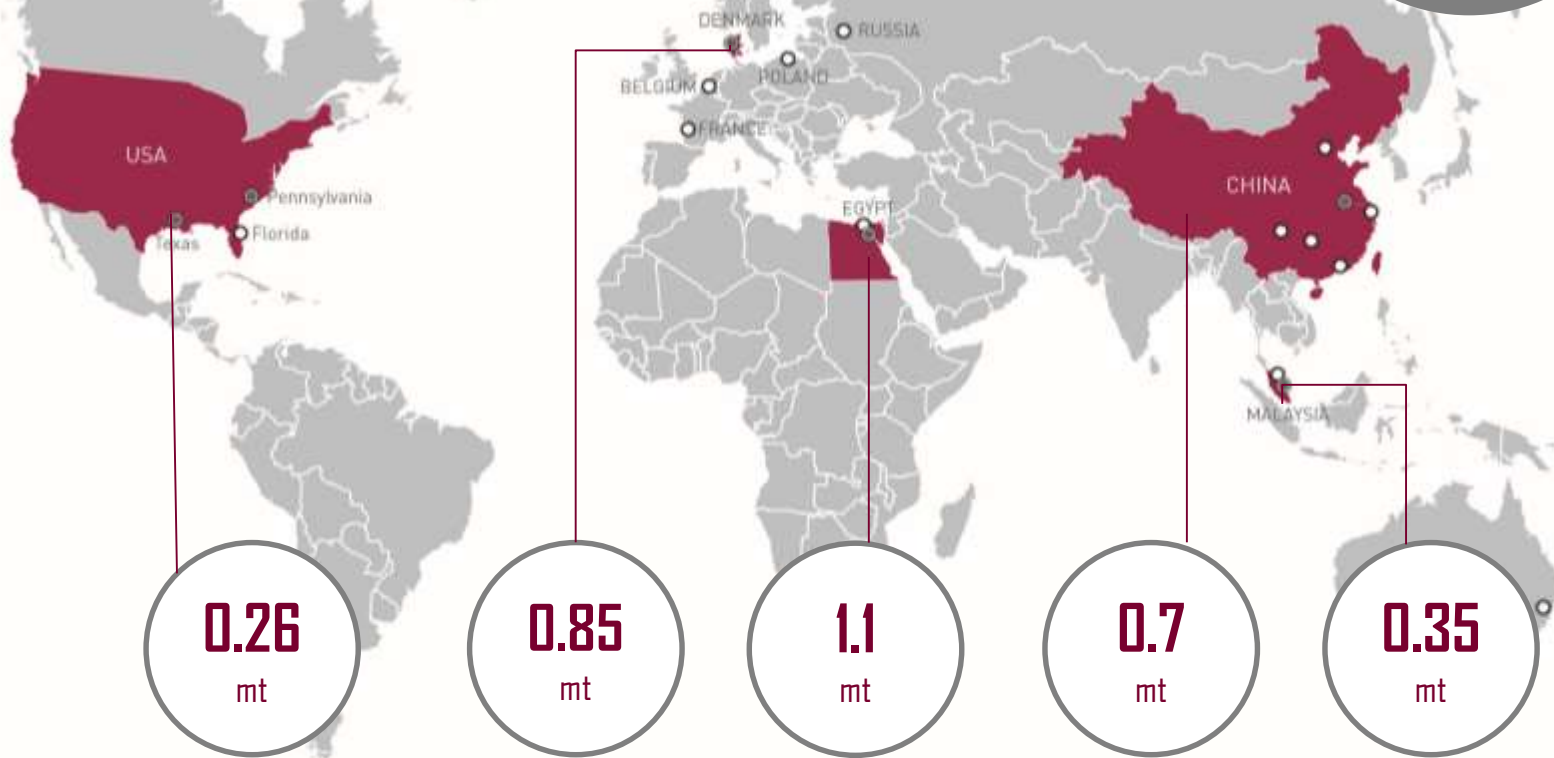


Concrete Dynamic

Aalborg White® Worldwide

Plants Capacity

TOTAL
3.26
Million t



Aalborg Portland In White Cement

125+

year's history as a global leading player in White Cement.

70+

countries worldwide are served under the global AALBORG WHITE® brand from production plants in Denmark, Egypt, Malaysia, China as well as US

3.26 mt

capacity and production facilities strategically located in four continents.

We provide:

- A reliable white cement supply of consistent quality for all cement features
- Value-adding services into the customers' supply chain
- Extensive technical and customer support
- Potential cooperation in (co)developing new applications using white cement

Cementir Holding:

is the mother company of Aalborg Portland, an international Group with operations in **17 countries**, with over **3,000 employees**, active in white and grey cement, ready mix concrete, aggregates, concrete products, waste management.

Unlimited Possibilities of White Cement

Segments:

1. Pre-stressed and Ordinary Reinforced Precast
2. Precast Products
3. Artificial Stones
4. GRC (Glass Fiber Reinforced Concrete)
5. UHPC (Ultra High-Performances Concrete)
6. Dry Mix Mortars
7. RMC



1. Pre-stressed concrete façade:
Chengdu Jingchuan Office Building,
China

2. Paving blocks: Kerb, Poland



3. Artificial stone: Villa façade application, France



4. GRC façade: Changsha Meixihu Art
Museum, China | Zaha Hadid Architects



5. UHPC staircase in Per Aarsleff
office building, Denmark



6. Skim coat | Tile Adhesives
Self levelling floor screed | Stucco



7. Cast in-situ concrete: Huai'an Shilian Chemical
Plant, China | Architect: Alvaro Siza

White Cement for Road Construction



- White cement is the same as.... grey cement without iron

	Grey cement	AALBORG WHITE®
C_2S	28 %	22 %
C_3S	48 %	65 %
C_3A	2 %	5 %
C_4AF	14 %	1 %
Alkali eq.	0.48 %	0.23 %

White Cement for Road Construction



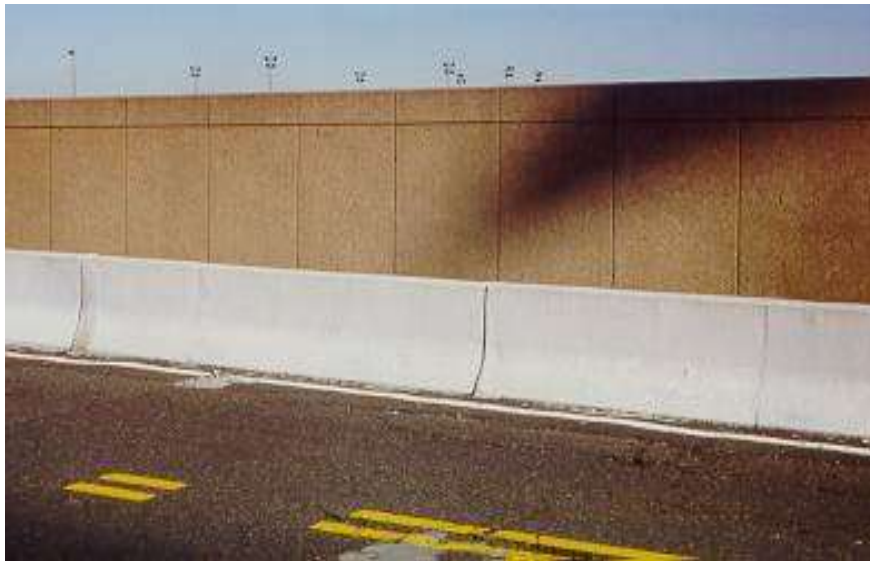
White Cement for Road Construction



White Cement for Road Construction



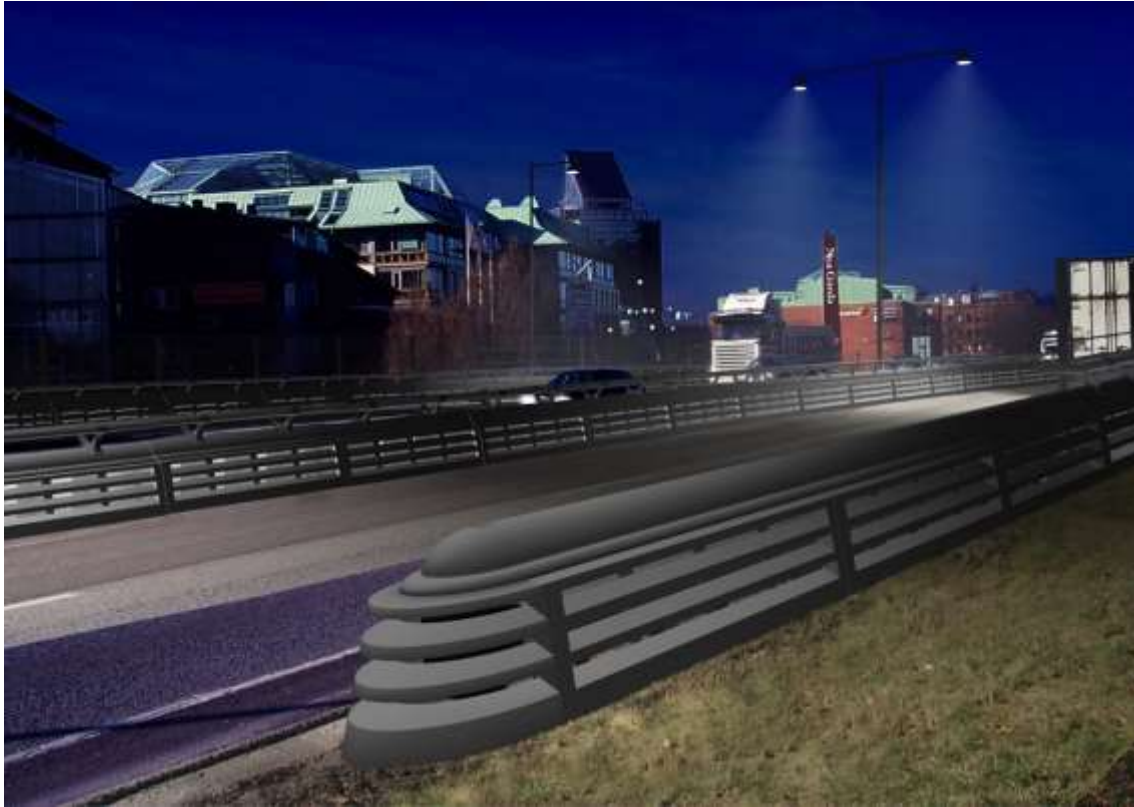
White Cement for Road Construction



White Cement for Road Construction



White Cement for Road Construction



White Cement for Road Construction



White Cement for Road Construction



White Cement for Road Construction

Grey Cement,
Regular Sand

White Cement,
White Sand

Grey Cement,
Slag &
Regular Sand

White Cement
Regular Sand

Grey Cement,
Natural
Pozzolan &
Regular Sand





**Grey Cement
Natural Sand**

L Values -
Dry: 54.1
Wet: 29.6



**White Cement
Natural Sand**

L Values -
Dry: 89.1
Wet: 77.5



**White Cement
White Sand**

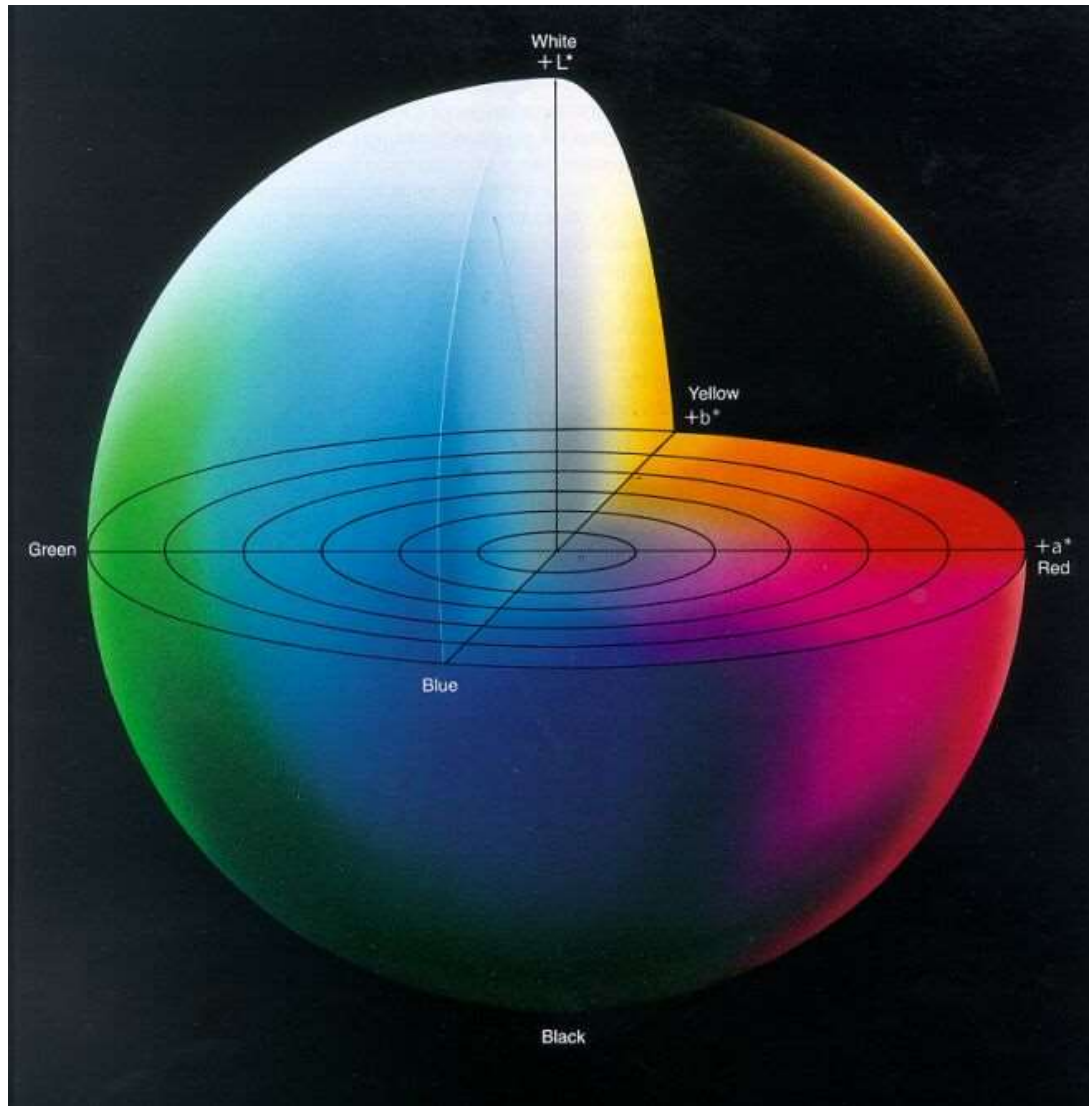
L Values -
Dry: 91.0
Wet: 82.6



- Grey cement
- Dark aggregates
- Light sand
- White cement
- Dark aggregates
- Light sand
- White cement
- Dark aggregates
- White sand
- White cement
- White aggregates
- White sand



White Cement for Road Construction



■ 33.6

■ 67.3

■ 73.4

■ 74.1



■ 55.1

■ 78.6

■ 80.6

■ 81.7

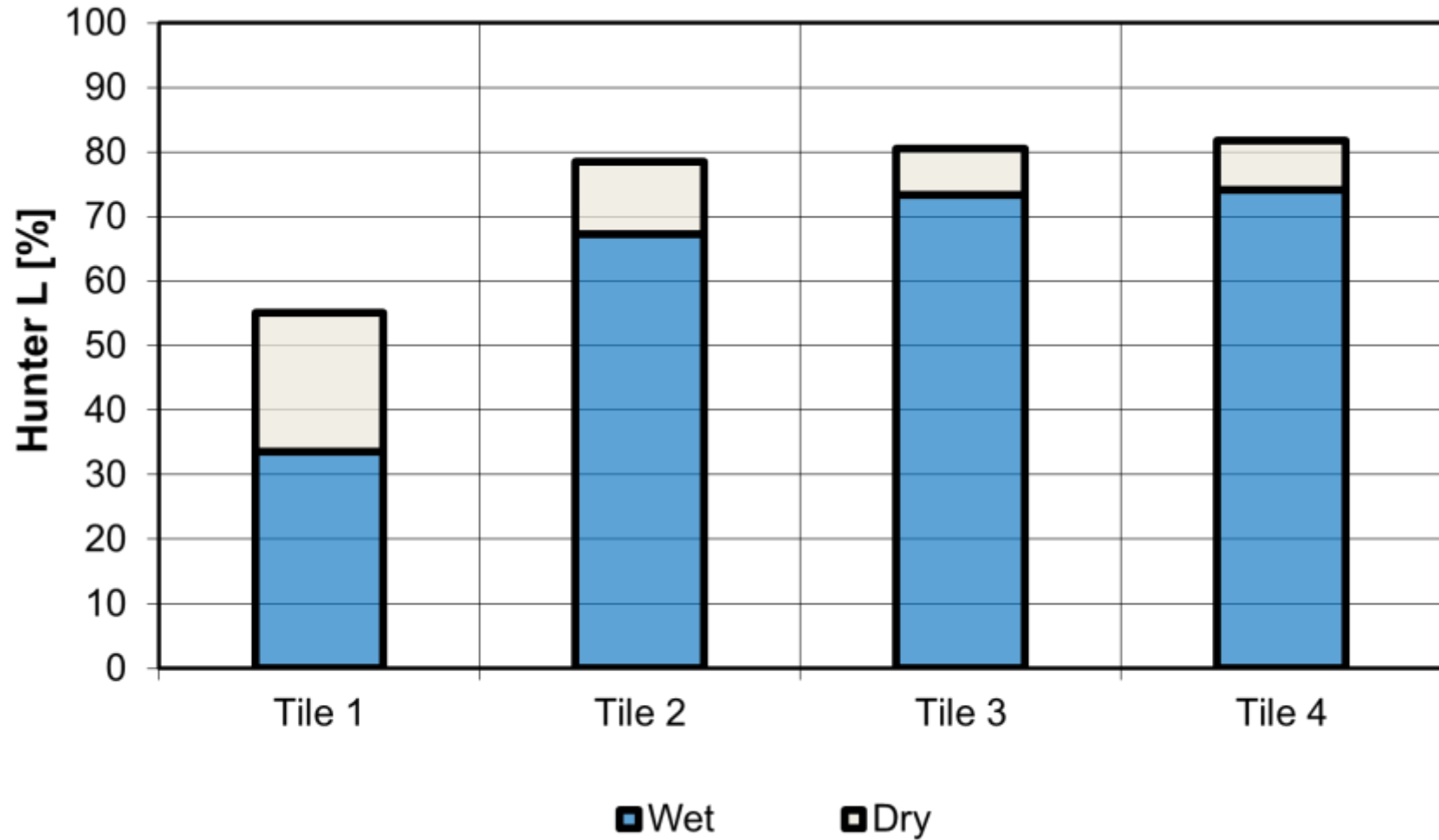
W-D = -21.5

W-D = -11.3

W-D = -7.2

W-D = -7.5

White Cement for Road Construction

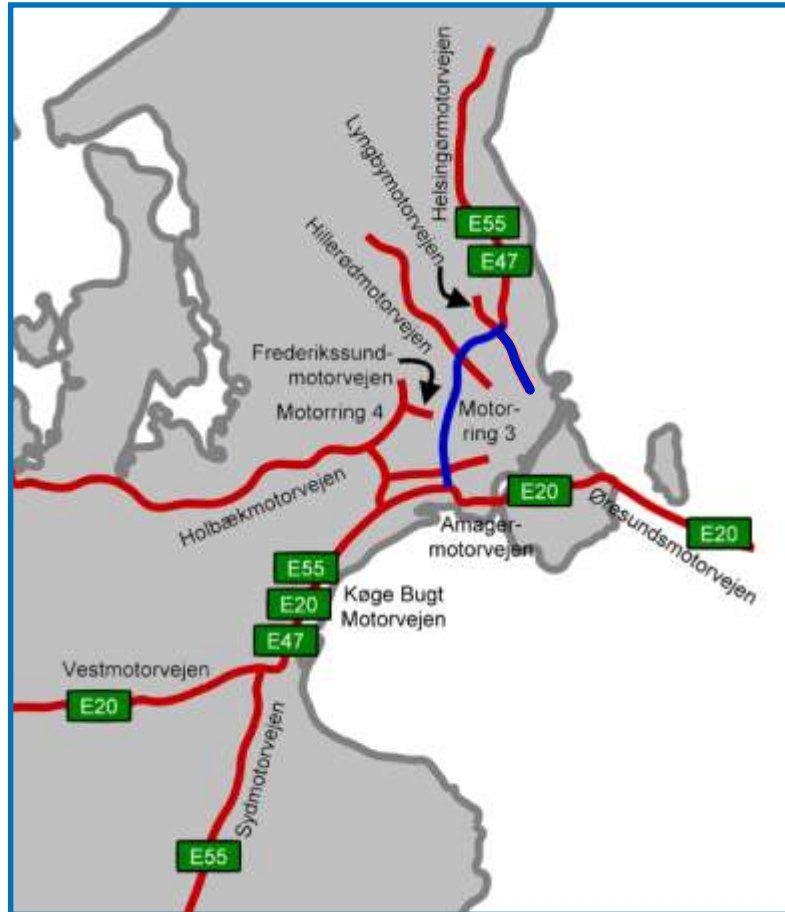


White Cement for Road Construction



White Cement for Road Construction

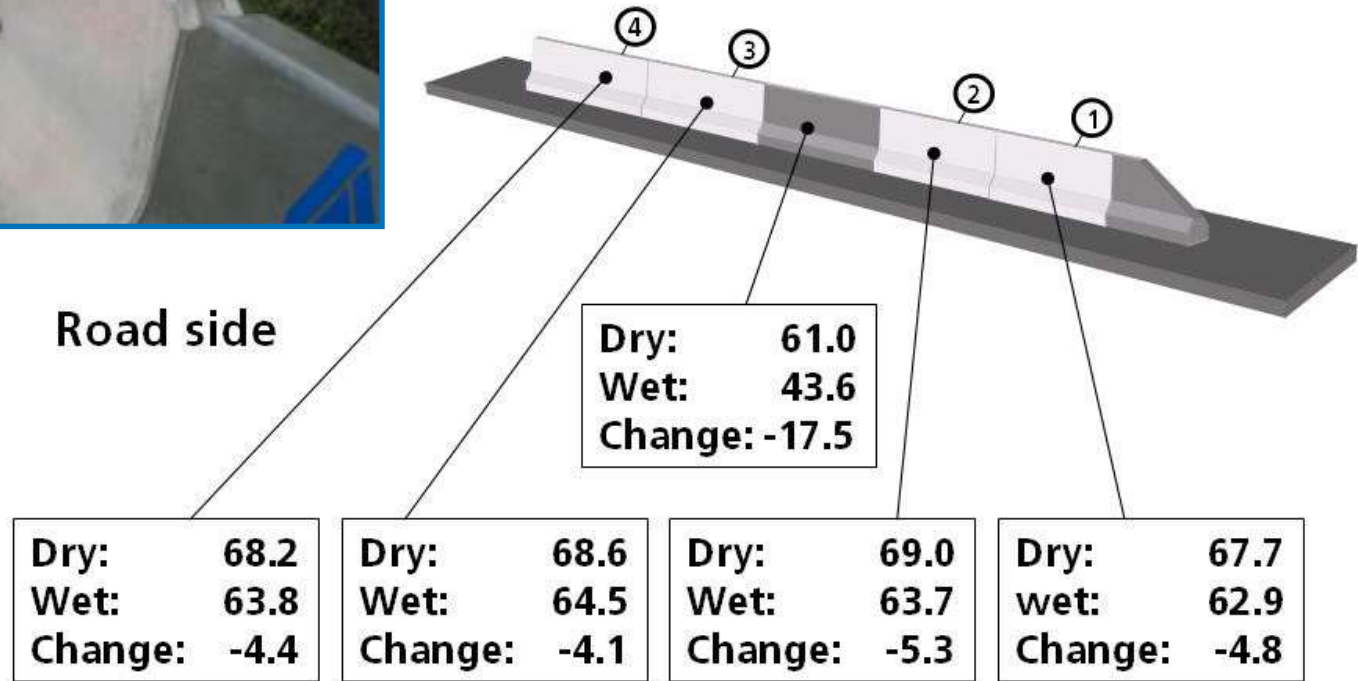




- During 2006 to 2008 white concrete road barriers were placed on Highway M3 and Lyngby Highway.
- 100.000 cars pr. day on each highway.
- 21 km highway renovated with road barriers.
- 14.000 concrete barrier elements and 14.000 concrete barrier cover elements.



DeltaBlock® road barriers
 Hunter L [%], details, dry & wet
 9 months of exposure



White Cement for Road Construction



White Cement for Road Construction



White Cement for Road Construction





White Cement for Road Construction



White Cement for Road Construction



White Cement for Road Construction







White Cement for Road Construction



White Cement for Road Construction



White Cement for Road Construction



White Cement for Road Construction



White Cement for Road Construction



White Cement for Road Construction



White Cement for Road Construction



White Cement for Road Construction



White Cement for Road Construction



White Cement for Road Construction



White Cement for Road Construction



White Cement for Road Construction

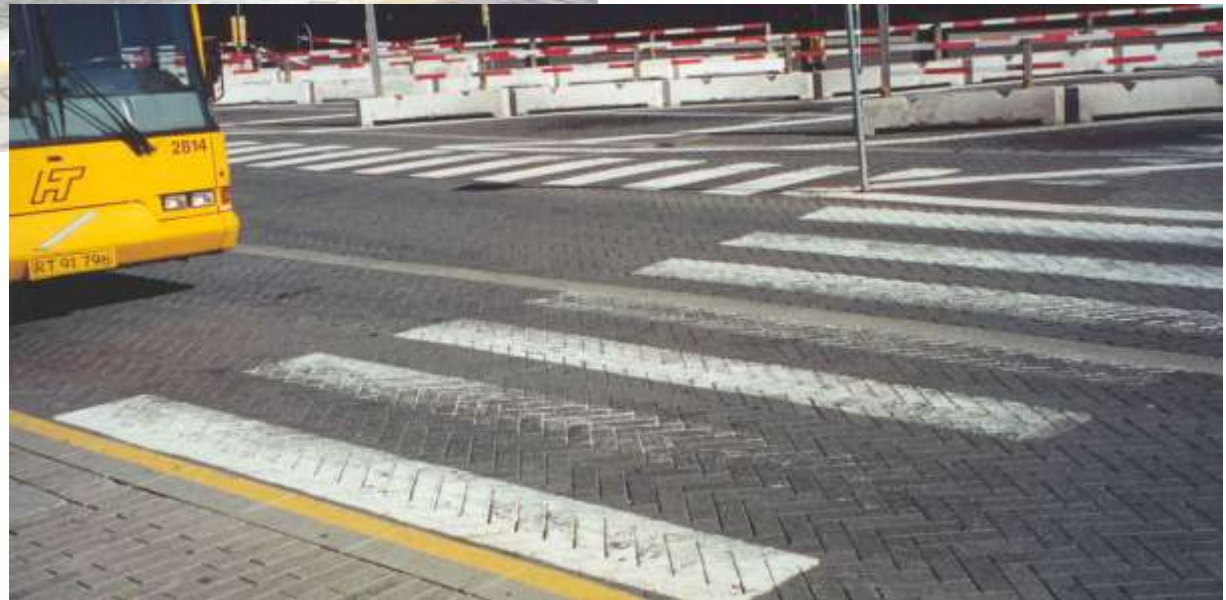


White Cement for Road Construction





White Cement for Road Construction



White Cement for Road Construction



White Cement for Road Construction



White Cement for Road Construction



White Cement for Road Construction



White Cement for Road Construction



White Cement for Road Construction





White Cement for Road Construction



White Cement for Road Construction



White Cement for Road Construction



White Cement for Road Construction



White Cement for Road Construction



White Cement for Road Construction



White Cement for Road Construction



Features

- Color Consistency
- Less 'darkening' in rain
- Aesthetically pleasing
- Reflective
- Cost effective
- Environmentally friendly
- Versatility
- Very low alkali

Benefits

- Uniform, vibrant colors
- More visible
- Beautifies roadways
- Increased visibility / safety
- Eliminates painting
- Cleaner environment
- Many options / products
- Resistance to ASR
(Alkali Silica Reactivity)



THANK YOU

